

EARTHCRUISER

44°02'01.1"N, 121°17'26.2"W

2022 Terranova Ford F-350 Gas

13,000 miles

\$325,000



Go Further. Stay Longer.

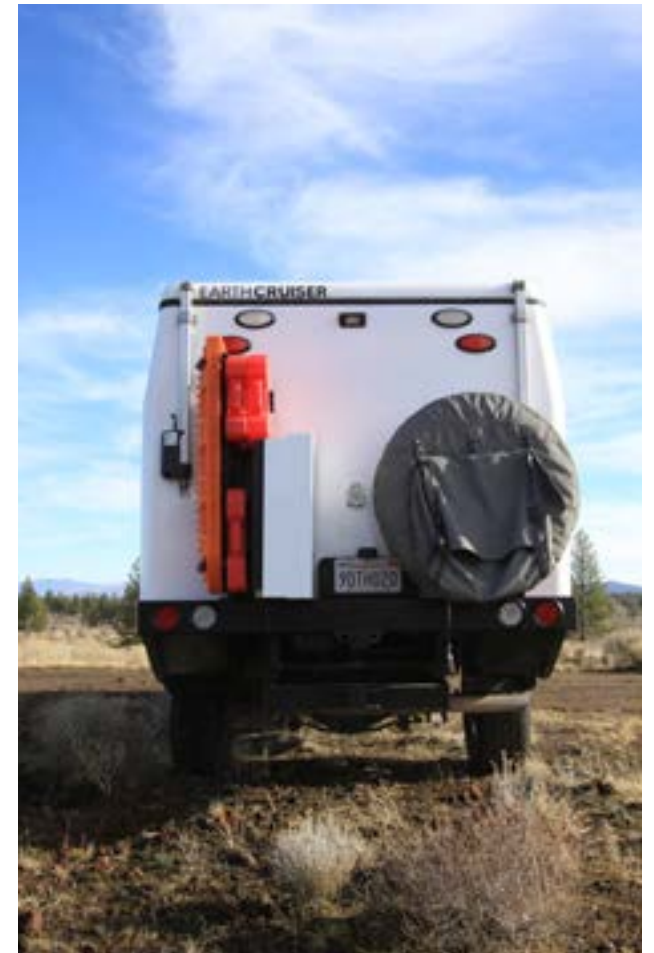
This well-looked-after EarthCruiser Terranova has low miles and is looking for its new home. It is built on a gas Ford F-350 chassis and has been through a full inspection and brought up to date with all maintenance. This rig is outfitting with tons of extras and is turn-key-ready for your next adventure.

Inside, you'll live comfortably and conveniently without worry from 800 amp hours of lithium-ion power storage and six Sunflare 108-watt solar panels, totaling 648 watts of generation. An added microwave packs additional space savings and convenience as you live your best life in the climate-controlled interior with a DC Air Conditioner and air heater.

This vehicle is loaded with tons of options and custom features to get you on the road and keep you there, including an expansion freshwater tank, Rotopax fuel containers, a 16,500 lb winch, a slide-in auxiliary fridge, and a locker box outside shower. To keep things smooth on the trail, this Terranova features Ride Rite air bags with a 2nd generation compressor and Mobile App WirelessAir.







Features

Additional Options:

16,500 lb. Winch w/ Synthetic Line
Grill Guard Addition
Additional Lithium House Battery, 400 Ah
3 Additional Sunflare 108 Watt Solar Panels (total of 6)
Bumper Light Package (6.7" Round and Curved Light Bar)
DC Air Conditioner
Bug Screen
Thermal Barrier
Locker Box Outside Shower
Locker Box Airline Track Package (15' of Track & 8 Tie Downs)
Fresh Water Expansion Tank - 20 gal.
Winterization Device
EC Custom Fridge Slider-in Locker w/ Fridge
Rear Bumper MaxTrax/Ax/ Shovel Holder/EC MaxTrax

Custom Upgrades:

Microwave
Airhead Toilet
Shower pan insert
Optional cubby and 110V outlet just above trash bin
AMP Research retractable steps
Ride Rite Air Bags;
2nd Generation Compressor with Mobile App WirelessAir
Four Rotopax with custom-made mounting solution

Standard Features:

Alloy Bull bar
Rear bumper with accessory 2" receiver
Tow package - Class IV hitch
Sunflare 108 Watt Solar Panels (x3)
Internal Drinking Water Purification System
Suspension Upgrade
Performance Shocks
Wheel/Tire Upgrade - A/T
Spare Tire with Cover and Rubbish Bag
OEM Reversing Camera
Electric Grey Dump Valve
5" Touch Screen Command Panel
110v Induction Cooktop
110v 4 gal. Water Heater
Air Heater









Specifications

PLATFORM

Chassis Style	Domestic 1 Ton Cab Chassis - Ford F-350 gas
Cab Style	Body on Frame
House Construction	Molded and insulated walls, floor, roof, and doors – approx. 1” thick
Curtain Construction	Triple-layer laminated, rated -22 to 158 deg F

SUSPENSION, WHEELS AND BRAKES

Suspension	Upgraded rear springs, Performance reservoir shocks
Wheels	Method Wheels
Tires	35” Toyo A/T Tires

EXTERIOR

Overall Width	81”
Overall Length	288”
Overall Height	100” Roof Down, 133” Roof Up
House Components	Electric roof actuators w/ manual override, locks/latches flush or recessed, integrated body side skirts, automatic open/close stairs w/ lockout
Lighting	LED side and rear scene lighting, high mount reverse and stop/turn/taillights

INTERIOR

Fresh Water Tanks	36 Gallons + 20 gallon expansion
Internal Area	90 sq.ft.
Kitchen	Stainless steel sink, purified water drinking tap, flexible kitchen faucet, 130L Isotherm refrigerator, induction cooktop, tilt-out rubbish bin
Sleeping Quarters	Flip down bed extension, 67” X 75” mattress, mattress suspension system, side cubbies with power points, slide out storage entry steps

SYSTEMS

Power	Mastervolt lithium battery system (LiFePO chemistry), Sunflare solar panels, DCDC charger, 3000W Inverter
Plumbing	Internally routed, 55 psi water pump, 110V 4 gal. water heater, shower gulper pump system, Seagull water filtration system, electric grey dump
Heat	Webasto Air Top Evo 40 heater
Control	Mastervolt C-Zone 5” touch screen, Webasto control unit
Air	150 PSI / 1.80 CFM Onboard Air Compressor



EARTHCruiser

44°02'01.1"N, 121°17'26.2"W

61510 American Lane, Suite 140
Bend, Oregon 97702

541.706.9101

sales@earthcruiser.com

earthcruiser.com